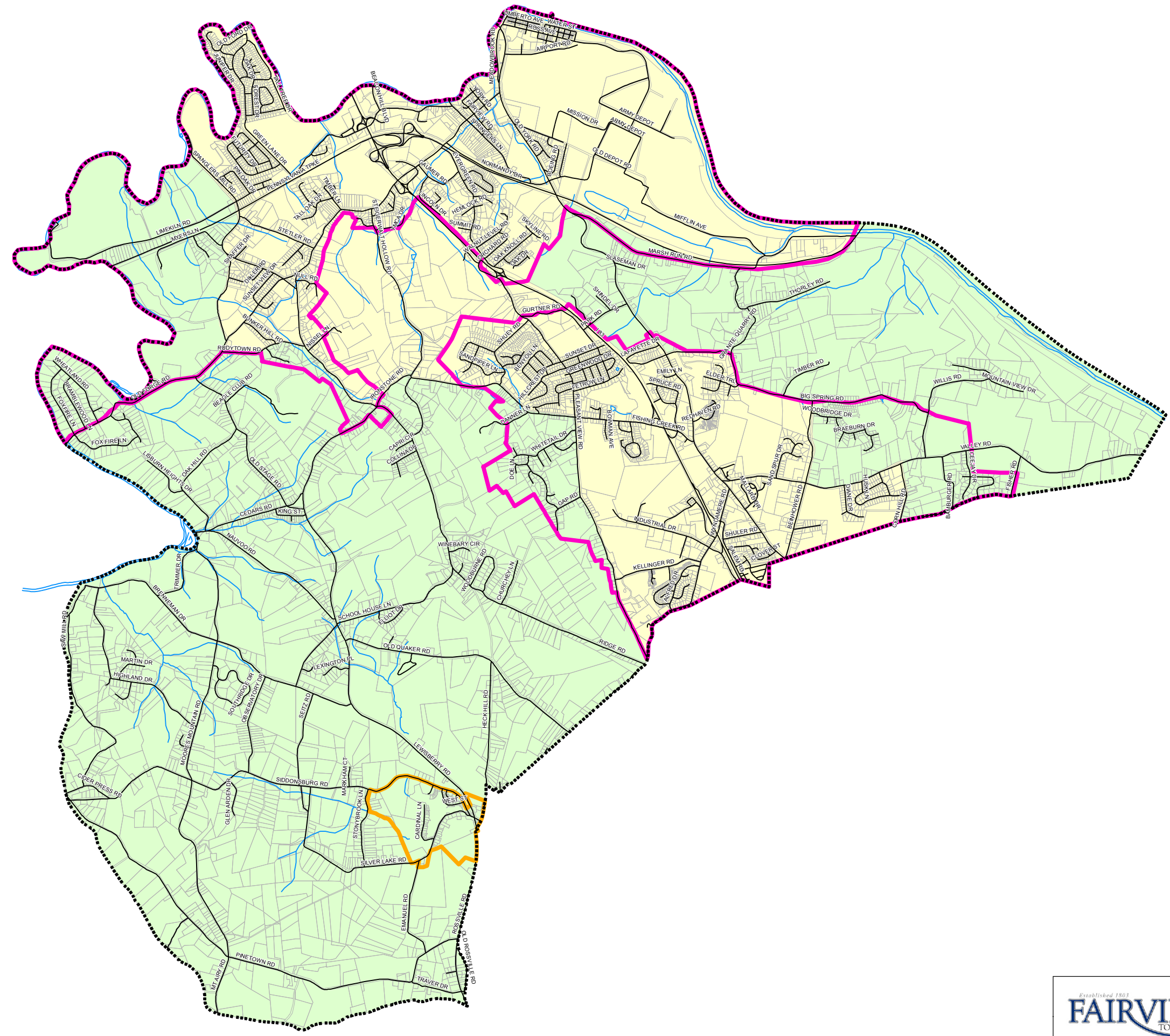


# FAIRVIEW TOWNSHIP COMPREHENSIVE PLAN

YORK COUNTY PENNSYLVANIA

## GROWTH AREAS



### Legend

- Municipal Boundary
- Roadways
- Streams
- Parcels
- Fairview Township Designated Growth Areas**
- Primary Designated Growth Area
- Secondary Designated Growth Area
- YCPC Interim Growth Areas (2004)**
- Interim Primary Growth Area
- Interim Rural Resource Area

Secondary Designated Growth Area is an area targeted for future growth and development because of its local land use patterns, development potential based upon land use regulations; however, due to the lack of planned public infrastructure expansion this area holds a lower priority for growth than in the designated growth area.

Primary Designated Growth Area is a region within the township that preferably includes residential and mixed use development permitted or planned for at densities of at least one or more units to the acre and commercial, industrial and institutional uses are permitted or planned for and public infrastructure services are provided or planned.

Sources: Fairview Township and YCPC GIS Datasets.



June 2010

