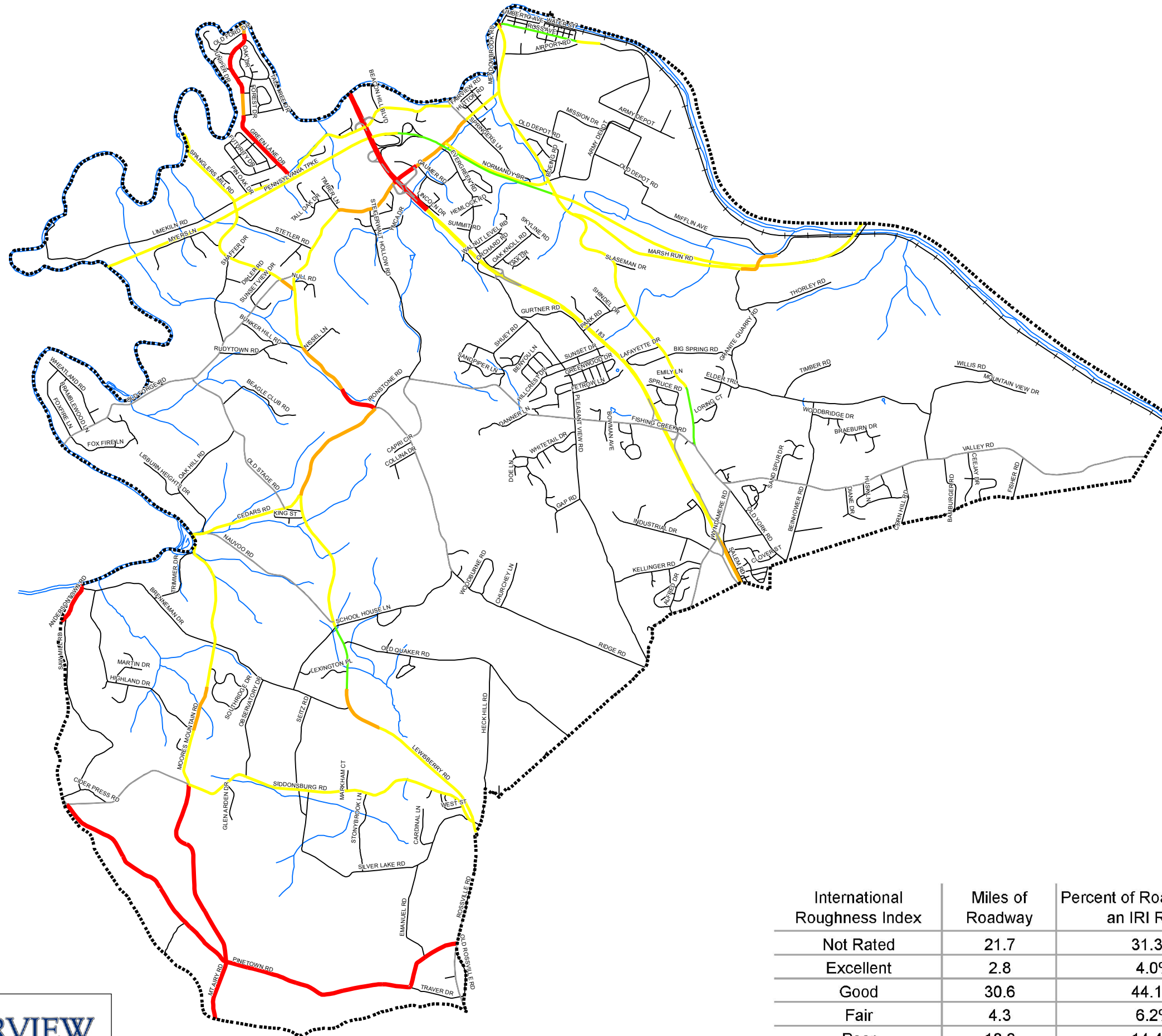


FAIRVIEW TOWNSHIP COMPREHENSIVE PLAN

YORK COUNTY PENNSYLVANIA

INTERNATIONAL ROUGHNESS INDEX



Legend

Municipal Boundary

Roadways

Active Railroad

Streams

International Roughness Index

Excellent

Good

Fair

Poor

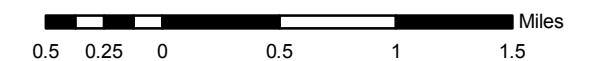
NO IRI DATA

Notes: Segments or portions of roads rated as having a "Poor" International Roughness Index include the following: Andersontown Road, Pleasant View Road, Valley Road, Interstate 83, and Wyndamere Road. The Ratings are based on the York Area Metropolitan Planning Organization's (YAMPO) Long Range Transportation Plan, 2006.

Sources: Fairview Township and YCPC GIS Datasets, York Area Metropolitan Planning Organization (YAMPO), 2006 data, PennDOT Centerline Files.



June 2010



International Roughness Index	Miles of Roadway	Percent of Roadways with an IRI Rating
Not Rated	21.7	31.3%
Excellent	2.8	4.0%
Good	30.6	44.1%
Fair	4.3	6.2%
Poor	10.0	14.4%
Total	69.4	100.0%

MAP 16